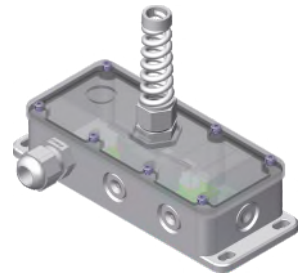


FOCUS CONTROL

with modular plug, relay output

- safety processing unit for FOCUS-sensors
- relay output
- duo switch technique
- high degree of protection IP66
- indicator LEDs
- operating voltage 10...30VDC



Functional description

The FOCUS CONTROL is a safety processing unit for the FOCUS pull-in protections and non-contact safety edges. The DUO-Switch technique operates 2 sets of photo switches without any interferences between the channels. The system is available in different connection and output options to make assembling as easy as possible but also to guarantee a maximum of safety. All relevant functions are indicated with LED's. Due to the high quality housing the FOCUS CONTROL is ideally protected against environmental influences, degree of protection IP66.

Technical data

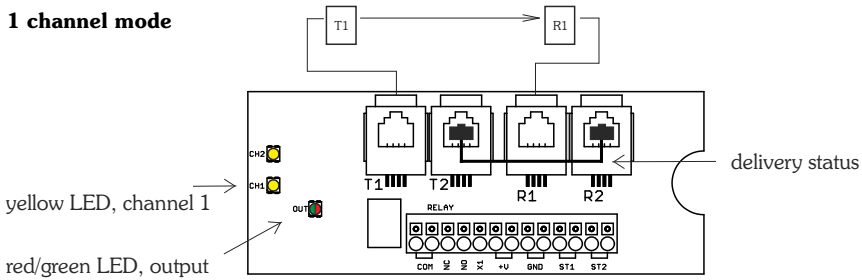
operating voltage	10...30VDC	operating temp.:	-25...+55°C
current consumption	<50mA	storage temp.:	-25...+80°C
degree of protection	IP66 according to DIN EN60529 only by use of provided cable glands and professional assembling	test input	0V switches off transmitter
features	2 channel safety processing unit	reaction time	<20ms
display	LED red/green display, 2x LED yellow, signal display of channels on with uninterrupted beams	output	change over relay, potential free max. 0,5A/48V AC/DC
type of connection:	to door control: 4-pin spiral cable connection sensors: modular plug	type of switching	light on
housing material:	ABS Rotec 1001, FR V0/4, color no. W1232 transparent cover: PC seal: EPDM	weight:	approx. 200g
		dimensions:	158x60x56mm ³

Declaration of conformity

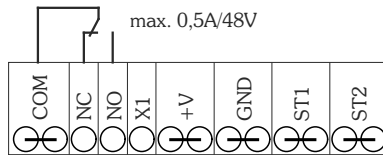
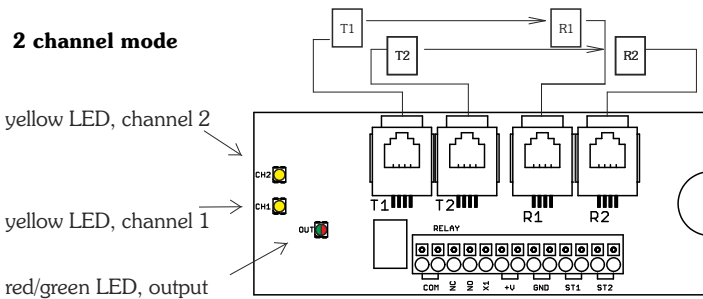
EMC directive 2004/108/EC
EN 61000-6-2 and EN 61000-6-3
Machinery directive 2006/42/EC
EN 12978
Type 2 according to IEC 61496-2
PL c and Cat. 2 according to EN ISO 13849



1 channel mode



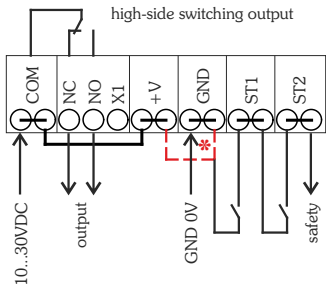
2 channel mode



Test input
10...30VDC

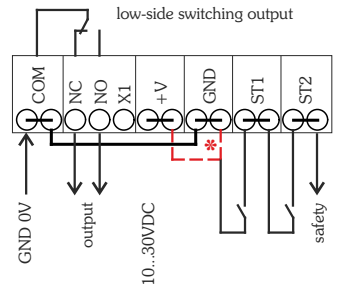
GND 0V

Connection sample

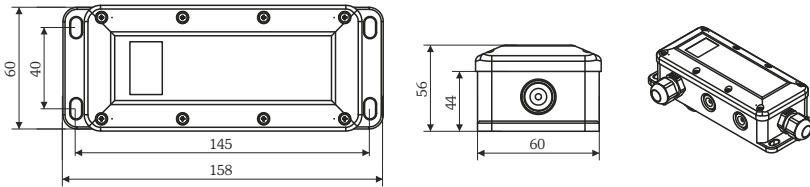


* PLUS or MINUS
for safety circuit
pass door/slack rope switch

ST 1 and ST 2 are potential
free contact points



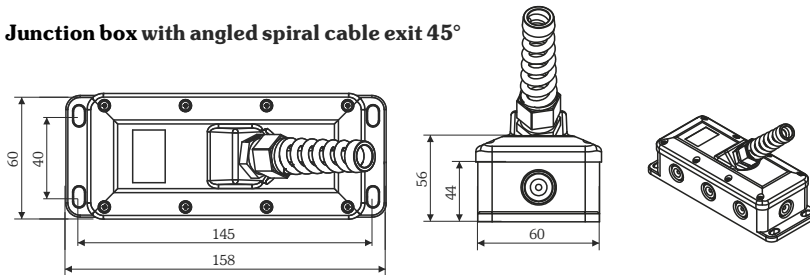
Junction box closed



Ordering details

Model order number
 FOCUS CONTROL REL-M-2K-0 316221
 relay output, modular plug, junction box closed
 included in the scope of supply: 2 cable glands

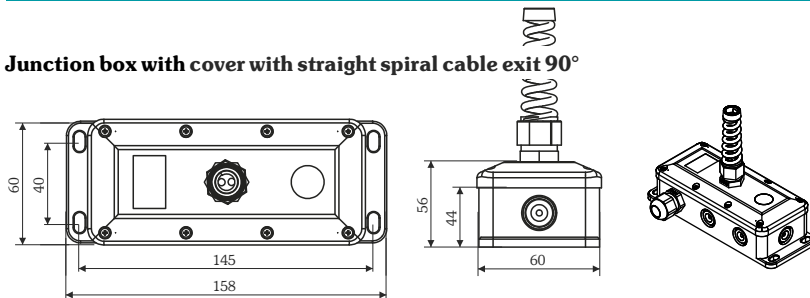
Junction box with angled spiral cable exit 45°



Ordering details

Model order number
 FOCUS CONTROL REL-M-2K-45 316271
 relay output, modular plug, with angled spiral cable exit 45°
 included in the scope of supply: 2 cable glands, 1 cable gland with anti-kink protection

Junction box with cover with straight spiral cable exit 90°



Ordering details

Model order number
 FOCUS CONTROL REL-M-2K-90 316269
 relay output, modular plug, with straight spiral cable exit 90°
 included in the scope of supply: 2 cable glands, 1 cable gland with anti-kink protection

Accessories



WITT-C4 Crimp tool for modular plug

for self-assembling of crimp connections

Ordering details

WITT-C4 316469



Modular-plug C4

for self-assembling of crimp connections,
packing unit 10 pcs. in a PE-bag

Ordering details

Modular-plug C4 316474